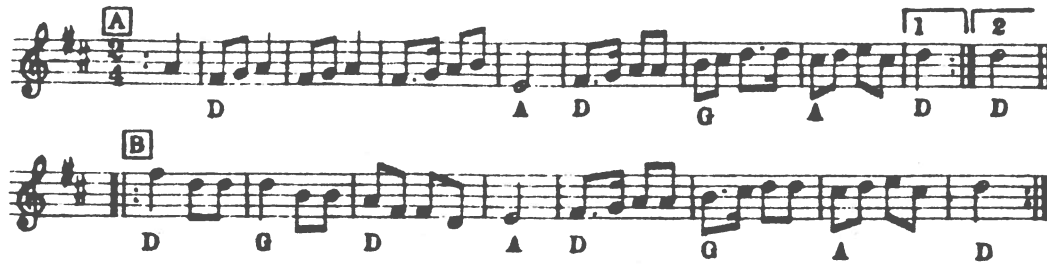


NELLY BLY



TRIPLE PROMENADE (silly threesome)

Musik: "Nellie Bly" eller "Blaydon Races"

Opstilling: 1 herre og 2 damersammen. Holdene stiller op som til march frem i danseretningen. Overskydende herrer i midten af salen indtil 2. reprise spilles 2. gang, hvor de går med under portene.

- 1-8 March fremad 3 og 3 sammen
- 1-8 Herren svinger damerne, først højre dame, så venstre.
- 9-16 March fremad igen.
- 9-16 De to damer danner port og Herrerne går under portene. Alle herrerne fra midten af salen går med. Musikken stopper pludselig, og man danner 3-erpar med den herre der er under porten. Marchen fortsætter efter så kort et ophold som muligt.

TRIPLE PROMENADE (Silly Threesome)

Music: Reels or Jigs e.g. "Nellie Bly" or "Blaydon Races".

Formation: In threes, each boy with two partners, facing in ballroom direction round the room. Spare boys may hover in the centre till B.2 when they join in the tunnelling and compete for partners.

A.1. Walk forward in threes.

A.2. Boys swing each partner in turn.

B.1. Walk forward in threes.

B.2. Girls form stationary arches for the boys to tunnel under until, the music unexpectedly stopping, all form new lines of three. (The spare boys from the centre join in the tunnelling and any left without partners return to the centre.)

Repeat after minimum break.

In A.2 the M.C. may decide to call any other figures—reel of three, basket, double arching, etc. If the boys have sufficient initiative, he may leave it to them to indicate their choice to the partners of the moment.